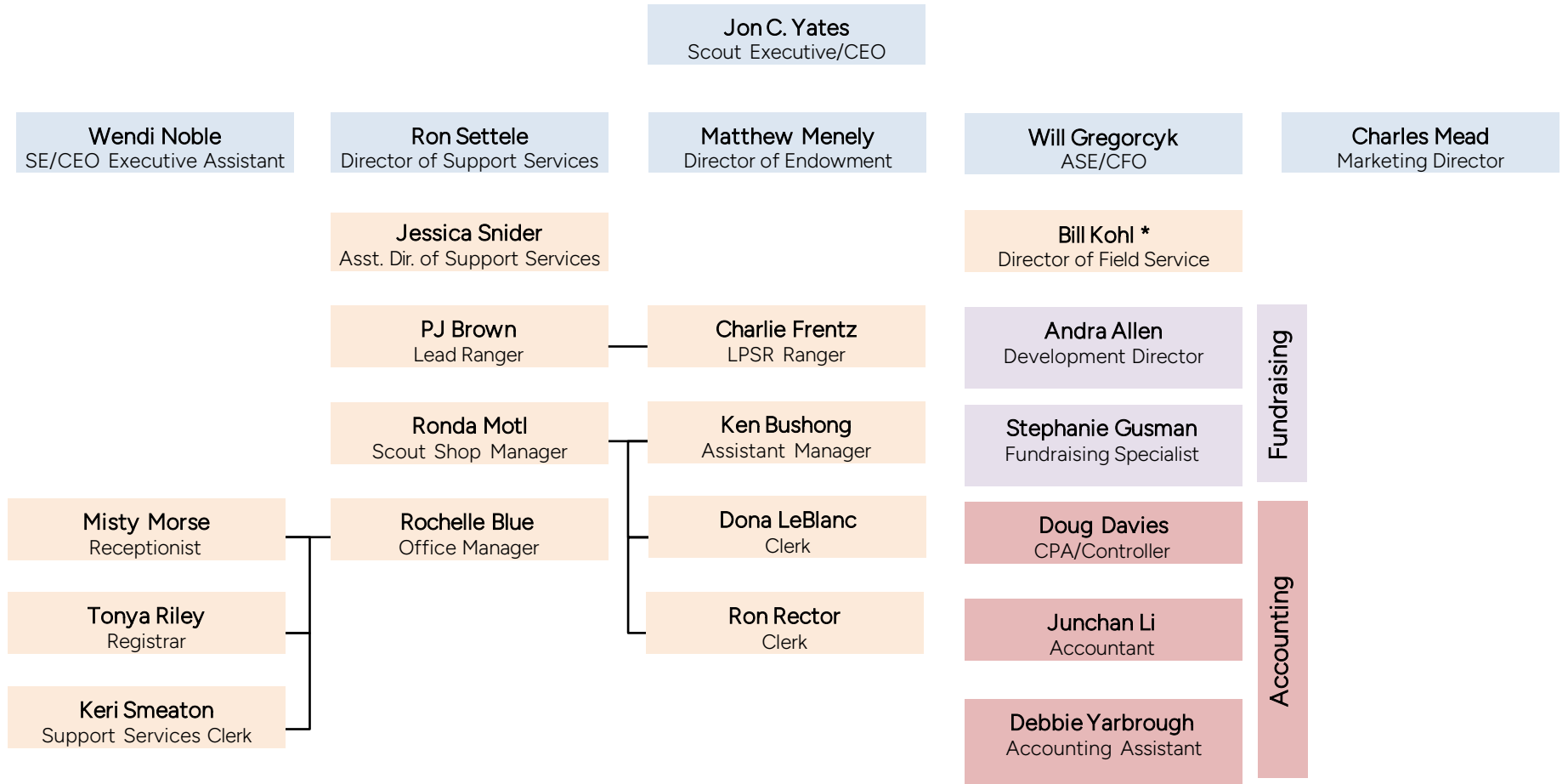


Capitol Area Council

Organization Chart



* Organizational detail on a separate page



Capitol Area Council

Organization Chart

Bill Kohl
Director of Field Service

Vicki Rosengarten
Field Director (Central SA)

Amara Davis
District Executive (AR)

Vacant
Community Executive (CR)

Vacant
District Executive (SG)

Sherrick West
District Executive (TB)

Jeremiah "JP" Perkins
Exploring Executive

Luke Segovia
Unit Growth Executive

Ed Grune
Field Director (Southern SA)

Vacant
District Executive (LO)

Vacant
District Executive (SS)

Adekemi Ademuyewo
District Executive (WL)

Franetta Sinsabaugh
District Assistant (WL)

Justin Brundin
Field Director (Northern SA)

Jackson Hivley
District Executive (BC)

Beccy Alston
District Executive (CT)

Andrew Lowenthal
Community Executive (HC)

Summer Jones
District Executive (NS)

Daniel Mathura
Unit Growth Executive



Capitol Area Council

Functional Organization Chart

Jon C. Yates
Scout Executive/CEO

Wendi Noble
SE/CEO Executive Assistant

SE Executive
Assistant Council
Board
Board Meetings
HR Representative
Council Insurance
Incident Reports

Ron Settele
Director of Support Services

Office Management

- Access/Alarms
- IT/PCs/Phones
- Janitorial Service
- Landscaping
- Mail Log
- Office Supplies
- Reception
- Registrar

Program

- Activities & Civic Service
- Advancement & Recognition
- Camping & Outdoor Program
- Training

Properties

- Capital Investment
- Rangers

Scout Shop

Matthew Menely
Director of Endowment

Endowment
Grants
Griffith League Scout
Ranch Credits
Smilin V Development

Will Gregorcyk
ASE/CFO

Field Service

- Unit Service
- Membership
- Popcorn

Development

- Distinguished Citizen Award Luncheon
- Facility Rentals
- Friends of Scouting
- Sporting Clays
- Tom Wooten Society

Finance

- Accounting
- Budget
- Credit Cards
- Deposits
- Payroll

Charles Mead
Marketing Director

Council Spokesperson
Crisis Communications
Marketing
Newsletters
Online Donation Systems
Public Relations
Social Media
Website Management

